

**Outcomes Testing and
Follow-Up Questionnaires**

Follow-up Scales

1. modified Rankin Scale
2. NIH Stroke Scale
3. Stroke Impact Scale
4. Barthel Index
5. extended Glasgow Outcome Scale
6. Glasgow Outcomes Scale

MODIFIED RANKIN SCALE

modified Rankin Scale

Score	Description
0	No symptoms
1	No significant disability despite symptoms; able to carry out all usual duties and activities.
2	Slight disability; unable to carry out all previous activities, but able to look after their own affairs without assistance.
3	Moderate disability; requiring some help, but able to walk without assistance.
4	Moderately severe disability; unable to walk without assistance and unable to attend to own bodily needs without assistance.
5	Severe disability; bedridden, incontinent and requiring constant nursing care and attention.
6	Death

modified Rankin Scale (cont.)

- Days 30, 90 and 180

NATIONAL INSTITUTES OF HEALTH STROKE SCALE

NIH Stroke Scale (NIHSS)

- 12-item scale
- Baseline (capture if done by care team)
- Randomization, Day 7
- Days 30 and 180
- Training
 - www.emissary.com/college

NIH Stroke Scale <input type="checkbox"/> Not Done				
Date	Time	NIHSS Total	Intubated	Sedated/ Paralyzed
Day 180	<input type="text"/>	<input type="text"/>	<input type="radio"/> Yes <input type="radio"/> No	<input type="radio"/> Yes <input type="radio"/> No
<small>Coma Scoring: When Question #1a is answered "3", coma scoring must be followed for the rest of the form. Specifically, Question #10 must be answered "2" even if subject is intubated.</small>				
1a LOC	<input type="text"/>	6a Motor: Left leg	<input type="text"/>	
1b LOC questions: Month and age	<input type="text"/>	6b Motor: Right leg	<input type="text"/>	
1c LOC Commands	<input type="text"/>	7 Limb Ataxia	<input type="text"/>	
2 Best Gaze: Horizontal Eye Movements	<input type="text"/>	8 Sensory	<input type="text"/>	
3 Visual Fields	<input type="text"/>	9 Best Language	<input type="text"/>	
4 Facial Palsy	<input type="text"/>	10 Dysarthria	<input type="text"/>	
5a Motor: Left arm	<input type="text"/>	11 Extinction and Inattention	<input type="text"/>	
5b Motor: Right arm	<input type="text"/>	12 Distal Motor Function: left hand and right hand	<input type="text"/>	

NIH Stroke Scale (NIHSS) cont.

- Coma
 - LOC score of 3
 - Try to stimulate subject
 - LOC <3
 - Test on all items

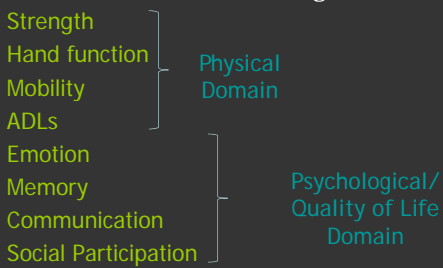
NIH Stroke Scale (NIHSS) cont.

Item	Description	Score
Item 1b	LOC questions	2
Item 1c	LOC commands	2
Item 2	Best gaze	Occulocephalic maneuver first
Item 3	Visual	Bilateral threat
Item 4	Facial palsy	3
Item 5 & 6	Motor arm and leg	4
Item 7	Limb ataxia	0
Item 8	Sensory	2
Item 9	Best language	3
Item 10	Dysarthria	2
Item 11	Extinction and inattention	2
Item 12	Distal motor function	2

STROKE IMPACT SCALE

Stroke Impact Scale (SIS)

59-item scale that assesses eight domains



Stroke Impact Scale (SIS)

- Patient and proxy version
- Days 30, 90 and 180

The screenshot shows the following questions and response options:

- 1. In the past week, how would you rate the strength of your hand? (A lot of strength, Quite a bit of strength, Some strength, A little strength, No strength at all)
- 2. In the past week, how difficult was it for you to... (Not difficult at all, A little difficult, Somewhat difficult, Very difficult, Extremely difficult)
- 3. In the past week, how often did you... (None of the time, A little of the time, Some of the time, Most of the time, All of the time)
- 4. In the past week, how difficult was it to... (Not difficult at all, A little difficult, Somewhat difficult, Very difficult, Extremely difficult)
- 5. In the past 2 weeks, how difficult was it to... (Not difficult at all, A little difficult, Somewhat difficult, Very difficult, Could not do at all)
- 6. In the past 2 weeks, how difficult was it to use your hand that was most affected by your stroke to... (Not difficult at all, A little difficult, Somewhat difficult, Very difficult, Could not do at all)
- 7. In the past 2 weeks, how difficult was it to use your hand that was most affected by your stroke to... (Not difficult at all, A little difficult, Somewhat difficult, Very difficult, Could not do at all)
- 8. During the past 4 weeks, how much of the time have you been limited in... (None of the time, A little of the time, Some of the time, Most of the time, All of the time)

Questions 8a-h include radio button options for response levels 1-5.

Actual raw score: [] Transformed score: []
 AVERAGE SIS SCORE (Questions 1-8): []

BARTHEL INDEX

Barthel Index (BI)

- 100-point scale
- Assess physical independence only
- Days 30, 90 and 180

Barthel Index (BI) cont.

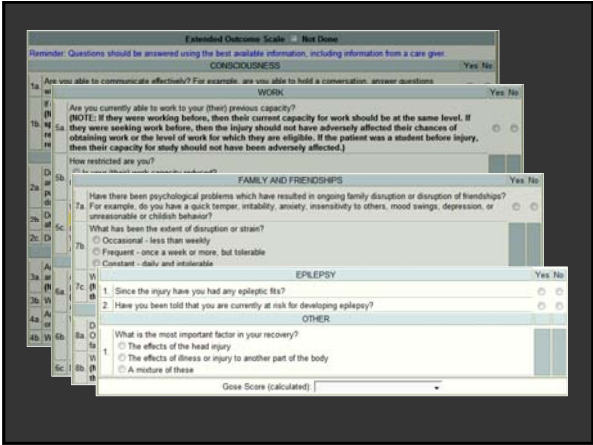
The screenshot shows the Barthel Index software interface. At the top, it says "Barthel Index" and "Not Done". Below that, there are fields for "Date of Survey" and "Time of Survey". A "Barthel Index Total" field is also present. The main part of the interface is a table with 10 rows and 2 columns, each containing a number, an activity name, and a dropdown menu for the score.

Activity	Score
1. Feeding	
2. Bathing	
3. Grooming	
4. Dressing	
5. Bowel Control	
6. Bladder Control	
7. Toilet Use	
8. Chair/Bed Transfer	
9. Mobility	
10. Stairs	

EXTENDED GLASGOW OUTCOMES SCALE

extended Glasgow Outcome Scale (GOSE)

- 8-category scale
- Day 30, 90 and 180



Visit Windows

– Timed from symptom onset:

- D30 = 14 days (7 days either side)
- D90 = 14 days (7 days either side)
- D180 = 28 days (14 days either side)

Source Documents

- Bedside worksheets are available
- Upload paper copies of assessments
– Source Documents Tab

Event Table

Scale	30d	90d	180d
mRS	X	X	X
NIHSS	X		X
SIS	X	X	X
BI	X	X	X
GOSE	X	X	X
GOS	X	X	X

e-Mail Notification System

- Reminder e-mails will be sent out a few weeks before the visit window opens

Important Points

- mRS is most important outcome
 - Defines primary objective
- **0% LOST TO FOLLOW-UP**

Thank you.
